

## Fees

Costs for analyzing your endometrial biopsy:

### Analysis of

uterine natural killer cells	125,60 €
uterine plasma cells	125,60 €
uterine regulatory T-cells	125,60 €

Analysis of two markers 221,48 €

Analysis of three markers 317,36 €

Shipping and handling charges may apply.

### Reprognostics:

- experts in endometrial diagnostics, gynecological pathology and reproductive immunology with many years of scientific and clinical experience
- numerous internationally published scientific studies dealing with reproductive immunology
- fast and high-quality processing, written report within 7 days after sample receipt
- committed and dedicated to women's health

## Contact

### Reprognostics GbR Gaiser - Kuon - Toth CUBEX<sup>41</sup>

Universitätsmedizin Mannheim  
Haus 41  
Theodor-Kutzer-Ufer 1-3  
68167 Mannheim

**Prof. Dr. Timo Gaiser**  
Specialist in Pathology

**PD Dr. Ruben Kuon**  
Specialist in Gynecology and Obstetrics  
Focus on Gynecological Endocrinology  
and Reproductive Medicine

**Prof. Dr. Bettina Toth**  
Specialist in Gynecology and Obstetrics  
Focus on Gynecological Endocrinology  
and Reproductive Medicine

**Dr. rer. nat. Maja Weber**  
Biologist

### Please contact us:

phone: +49 621 15020630  
info@reprognostics.de  
www.reprognostics.de

Extended diagnostics in  
Reproductive Medicine



■ Analysis of the  
Endometrium

# REPRO gnostics

## Dear patient,

even with optimal reproductive care failed embryo implantation or miscarriage can occur. Possible causes and risk factors might be on the side of the embryo or the uterus.

The uterine mucosa (endometrium) is the place for embryo implantation and therefore of crucial importance for reproductive success. As experienced reproductive physicians we have made it our mission to offer you the best possible diagnostic evaluation of the endometrium.

At Reprognostics we use a variety of specific techniques to identify immunological conditions, that may contribute to failed embryo implantation.

To do so, few endometrial cells are removed with a biopsy and sent to our laboratory.

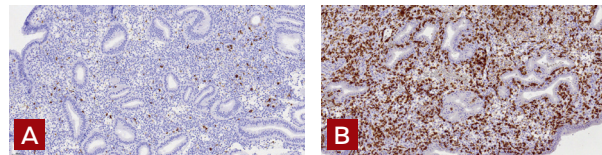
You can find further information and an overview of therapeutic options on our website. Your on-site fertility team will inform you about the results of your endometrial biopsy and plan a personalized therapy.

[www.reprognostics.de](http://www.reprognostics.de)

Your team of Reprognostics GbR

## Uterine natural killer cells (uNK cells)

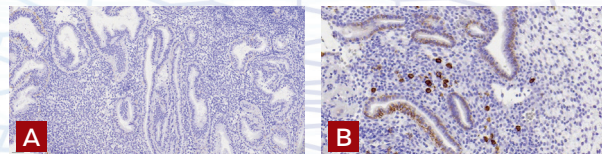
Uterine natural killer cells are immune cells that play an important role especially during the second half of the menstrual cycle (luteal phase) and in early pregnancy. They are called „killer“ cells because they „kill“ viruses and bacteria, but also tumor cells and thus protect the organism. Several studies indicate an increase of uNK cells in about 20-30 % of patients with implantation failure or recurrent miscarriage that may be harmful.



uNK cells appear brown  
A: normal number of uNK cells  
B: elevated number of uNK cells

## Uterine plasma cells

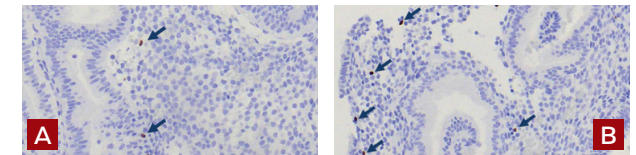
Uterine plasma cells accumulate in the endometrium in case of chronic inflammation (so-called chronic endometritis). Approximately 15 % of all women with implantation failure or recurrent miscarriage are affected by chronic endometritis. Chronic endometritis may present without any symptoms and may remain undiagnosed. Our special diagnostics reliably identify chronic endometritis.



uterine plasma cells appear brown  
A: no plasma cells  
B: elevated number of plasma cells

## Uterine regulatory T-cells (uTreg)

Uterine regulatory T-cells belong to the group of T-lymphocytes. They regulate the activity of the immune system and can promote the tolerance of the immune system towards the embryo. They also prevent excessive immune reactions and play an important role during embryo implantation. A decrease in uTreg is more prevalent in patients with implantation failure or recurrent miscarriage and may play a causative role.



uTreg appear brown  
A: decreased number of uTreg  
B: normal number of uTreg

